

Mounting kit for Motorola Repeater SLR 1000

DESCRIPTION

- Mounting kit for Motorola Repeater SLR 1000.
- Mount MPX 2/6 or MPX 70/6 easily in SLR 1000 repeater.
- Installation instructions are included in the package.
- Filters to be ordered separately.



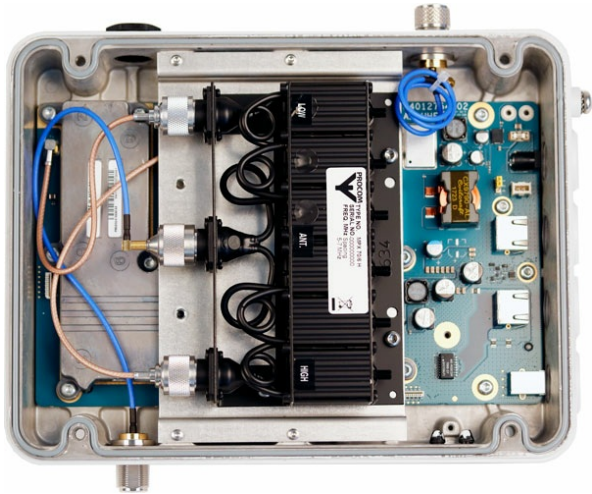
SPECIFICATIONS

Mechanical	
Contents	1 Mounting plate 1 Adapter N(m) / MCX(f) 4 M4x6 Torx 20 4 M4 spring disc 4 M3x6 mm Torx 10
Jumper Cable	1 cable 280 mm / 11.02 in. with N(m) / MCX(m) 1 cable 200 mm / 7.87 in. with N(m) / MCX(m)
Tools	Torx Screwdriver 20 Torx Screwdriver 10 Flat pliers

ORDERING

Model	Product No.
Mounting kit for SLR 1000	200002725

INSTALLATION



Repeater & Filter not included in mounting kit.

MOTOROLA REPEATER UNIT

